



INSTRUCTION SHEET

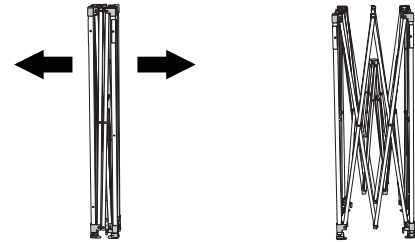
Includes: (1) Frame, (1) Fabric Top, (1) Peak Cap, (1) Wide-Trax™ Roller Bag, (1) 4-Piece Stake Kit



SET UP

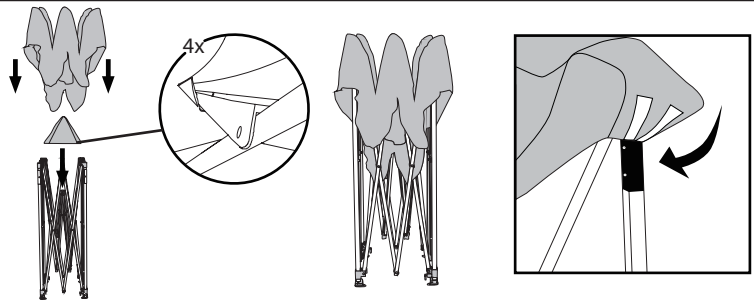
1 OPENING THE SHELTER FRAME

- Place your E-Z UP® frame in the center of the area to be sheltered.
- Lift and partially pull the shelter frame apart.



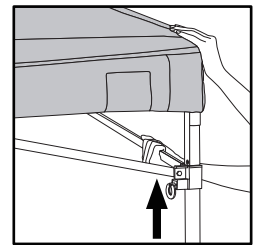
2 ATTACHING THE SHELTER TOP

- Place the peak cap over the top part of the frame and slip the corners into the pockets.
- Unfold the fabric top and place on top of the frame.
- Secure the fabric top to the corners of the frame using the hook and loop connections.



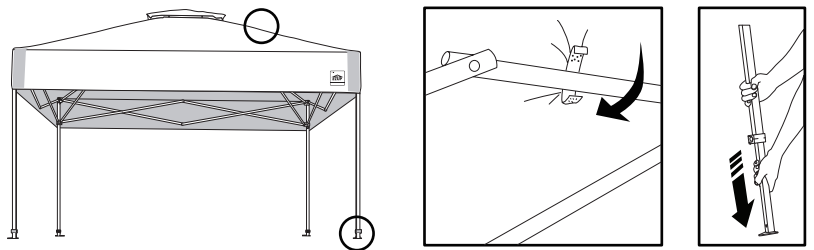
3 SECURE AUTO-SLIDER® PULL PIN

- Fold up fabric top on the corner.
- Lift shelter corner to engage the Auto-Slider® Pull Pin by pushing up on the frame side trusses with one hand while holding down the top of leg with the other hand. The pins will align with the holes and lock in place.
- Pull fabric top down over the leg making sure it is secure using the hook and loop connections.



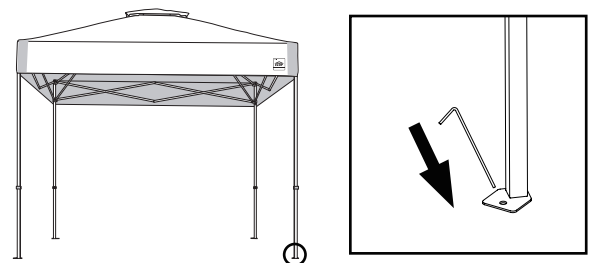
4 ADJUSTING THE SHELTER HEIGHT

- Finish securing the frame inside the shelter top using the hook and loop strips.
- Press the toggle adjustment on each leg and raise or lower to adjust the shelter height.

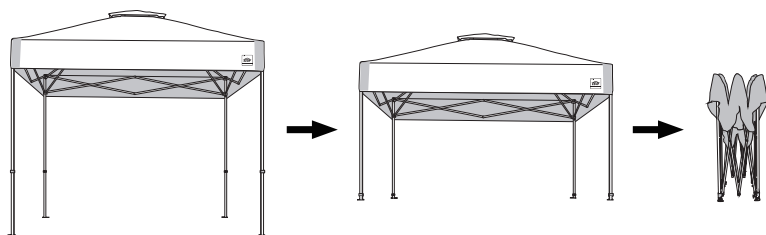


5 SECURING THE SHELTER IN PLACE

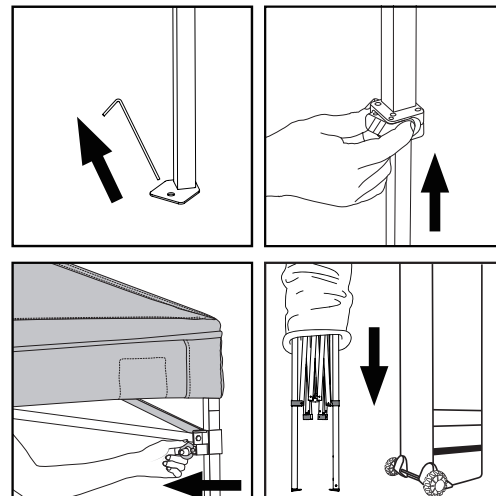
- Insert the supplied stake into the foot of each shelter leg.



TAKEDOWN



- Pull up all stakes from the ground. Press the toggle adjustment on each leg and retract the legs to their original height.
- Slightly push up on the truss near the Auto-Slider® Pull Pin to relieve pressure. With the other hand, release the Auto-Slider® Pull Pin by pulling the ring.
- Lift one corner of the frame until all legs are raised off the ground except for the one leg on the opposite corner. Push inward until the frame is fully closed.
- Slide the roller bag over the closed shelter.

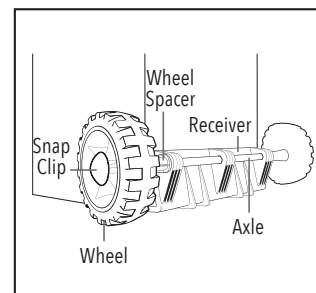


ROLLER BAG (One-Time Assembly)

Use the Roller Bag to store and transport your shelter and Stake Kit.

- Slide Axle through Roller Bag Receiver.
- Slide the two Wheel Spacers onto each side of Axle (one on each side).
- Slide one Wheel onto each side of the Axle.
- Push Snap Clip over Wheel Axle end (against Wheel).

Your Roller Bag is ready to use!



CARE AND MAINTENANCE

For long lasting durability and the best possible protection for your E-Z UP® Instant Shelter® products, follow these E-Z care and maintenance instructions:

- Use a mild soap (not detergent) and plenty of water for the top cleaning.
- Let the E-Z UP® top and frame dry completely before closing or storing to avoid mildew.
- Frame will operate and look better if occasionally treated with silicone spray, especially before and after use in damp conditions. Remove excess silicone residue before applying top.
- Use a seam sealer (available at most sporting goods and hardware stores) if top leaks or drips water.
- Slightly tighten bolts if frame becomes loose.

REPLACEMENT PARTS

800-45-SHADE ezup.com/parts.html

WARRANTY INFORMATION

ezup.com/support/warranties

IMPORTANT INFORMATION

Read this information before proceeding. It is the user's responsibility to take the following precautions at all times.

- Always stake or weigh down your E-Z UP® Instant Shelter® product with genuine E-Z UP® accessories. See ezup.com for products and guidelines. Do not use in any potentially windy or rainy weather.
- Wind and rain can damage the E-Z UP® Instant Shelter® product and also may result in injury to you or others. Therefore, do not rely on your shelter for protection in heavy or prolonged rain storms.
- The E-Z UP® Instant Shelter® product is designed as a temporary shelter. Do not leave up for extended periods.
- Use caution when handling the E-Z UP® folding frame.
- Avoid pinching hands or fingers as frame opens or closes.
- Do not use shelter in a lightning storm.
- Do not leave your E-Z UP® Instant Shelter® product unattended.
- Do not build fires within shelter enclosure.

CONDITIONS

This warranty shall be void as to any product that has been altered or modified in any manner. This warranty does not apply to damages caused by wind, rain, or other forces of nature, not to accidental or deliberate damage of the product, nor to the use of the product that does not conform with the product instructions. This warranty is provided in lieu of all other warranties, expressed or implied.

WARNING: Keep all flame and heat sources away from all Instant Shelter® fabrics and accessories. These fabrics meet the flammability requirements of CPAI-84. The fabric may burn if left in continuous contact with any flame source. The application of any foreign substance to the fabric may render the flame-resistant properties ineffective.

© Copyright 2025 International E-Z UP, Inc. USA. All rights reserved.