

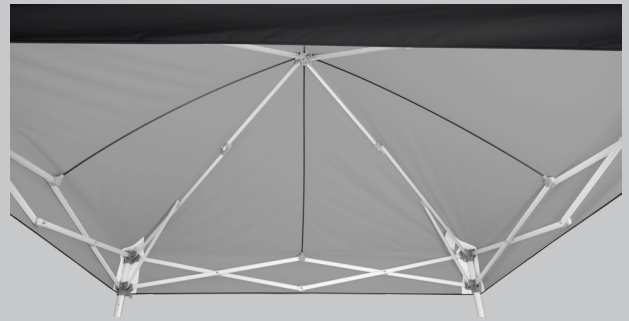


# Endeavor™ MAX



Introducing the Endeavor™ MAX (Patent Pending), a revolutionary canopy designed to conquer the toughest conditions. With its innovative open ceiling and dynamic flex rods, this shelter offers unmatched protection against wind and rain. The reinforced, flexible rods actively respond to wind force, while the top creates a convex, dome-like geometry that repels rain and minimizes saturation and moisture pooling. Enjoy maximum headroom and the ability to enhance your workspace with accessory mounts for lighting, ventilation, and more.

## PROTECTION *WITHOUT* COMPROMISE



### FEATURES

- Innovative Flex Rod Reinforcements for Enhanced Wind & Rain Resistance
- High-Clearance Ceiling Design for Maximum Headroom with Increased Comfort
- Aircraft Grade Aluminum Frame with Octagonal Shaped Legs for Added Strength
- Integrated Accessory Hook in Center Peak - Ideal Placement for SKYFUZE® LED Balloon Light
- Professional Grade Fabric
- Heavy-Duty High-Strength Corners for Greater Durability
- Auto Slider® Pull-Pins and E-Z Glide Truss Washers for Fast Set Up & Take Down
- Adjustable Pinch-Free Leg Toggles - 5 Height Options
- Endeavor™ Max Only Offered with a Clear Aluminum Frame

### TOP COLORS

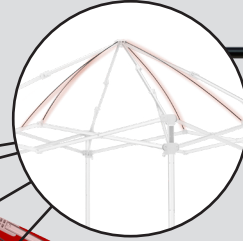


# TECHNOLOGY

**Integrated Accessory Hook**  
Ideal for Hanging Lights and More



**4 Dynamic Flex Rods**  
Innovative Reinforcements for Enhanced Wind & Rain Resistance



**E-Z Glide Truss Washers**  
Provide Low Friction for Smooth Set Up



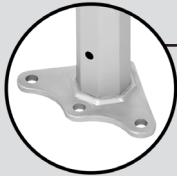
**Stabilized Power Structure**  
Multiple Stabilization Points for Reinforced Support



**High-Strength Corners**  
Heavy-Duty for Greater Durability



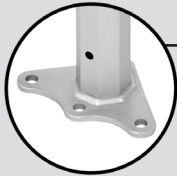
**Auto-Slider® Pull Pin**  
Grooved for Quick Lock and Release



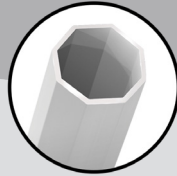
**Toggle Leg Adjusters**  
Comfortable Toggle Grip with 5 Height Adjustment Options



**Heavy-Duty Foot Pad**  
Extra Wide for Increased Stability



**Aircraft-Grade Aluminum Frame**  
Lighter Weight Aluminum with Octagonal Design for Added Performance



## SPECIFICATIONS

<b>SHADED AREA</b>	100 sq ft (9 sq. m)	<b>MAXIMUM HEADROOM</b>	10' 11" (3.3 m)
<b>FRAME SHIPPING WEIGHT</b>	68 lbs. (27.4 kg)	<b>MAXIMUM VALANCE CLEARANCE HEIGHT</b>	6' 10" (2.1 m)
<b>TOP SHIPPING WEIGHT</b>	12 lbs. (5.4 kg)	<b>TOP FABRIC</b>	Professional Grade
<b>TOP BOX DIMENSIONS</b>	26.5" L x 10.5" W x 3.5" H (67.3 cm x 26.7 cm x 8.9 cm)	<b>FIRE CERTIFICATION</b>	Meets the CPAI-84, NFPA-701, and CAN/ULC-S109 Fire Certifications
<b>FRAME BOX DIMENSIONS</b>	67" L x 14" W x 14" H (1.7 m x 36 cm x 36 cm)	<b>CUSTOM PRINTING OPTIONS</b>	Custom Graphics Available
<b>MAXIMUM PEAK HEIGHT</b>	11' 2" (3.4 m)	<b>WARRANTY</b>	7 Year

# Endeavor<sup>TM</sup> MAX

**International E-Z UP, Inc.**  
1900 Second Street  
Norco, California 92860  
(951) 279-0999 • FAX (800) 810-8775

TO ORDER:  
**(800) 45-SHADE**  
(800) 457-4233